

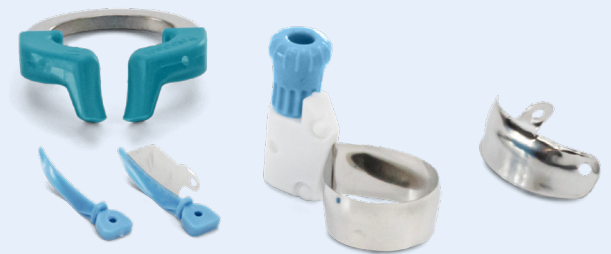


**2 out of 3 dentists have trouble achieving adequate isolation in a Class II restoration.<sup>1</sup>**

If the restorative field is contaminated with moisture, the physical properties and ultimate success of the restoration may be compromised.<sup>2</sup>

## Achieve effective isolation and reduce the window of risk for contamination.

Use the Palodent® Family of Matrix Systems together with Surefil one™ restorative in cases where isolation and procedure time are critical.



### Palodent® Matrix Systems

Create a tight seal with naturally adapted contours using either the sectional or circumferential matrix systems.

### Surefil one™ Self-Adhesive Composite Hybrid

Bond, fill, and finish with one material, reducing procedure time and minimizing the window of contamination risk.



**Restore your love for Class II procedures with effective isolation and a shorter procedure time.**

The Dentsply Sirona Class II Approach provides everything you need to quickly **manage challenging isolation cases** and finish procedures faster.

## Palodent® Matrix Systems

Palodent® sectional and circumferential matrix systems are designed to ensure a tight seal that keeps restorative fields dry and prevents contaminants from entering the working field, enabling the adhesive and restorative materials to perform to their optimum potential.



The Palodent® Family of Matrix Systems creates a tight seal around the restorative field (right), providing effective isolation from contamination.

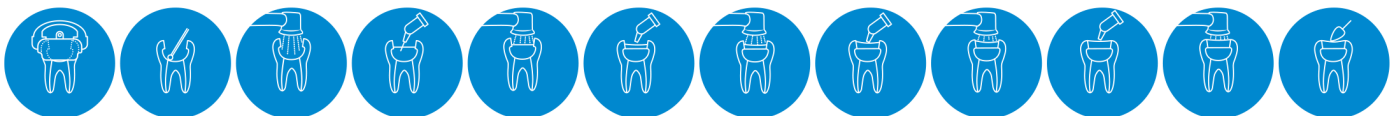
## Surefil one™ Self-Adhesive Composite Hybrid

Eliminate etching, bonding, and layering with Surefil one™ restorative and complete Class II restorations 35% faster.<sup>3</sup> Surefil one™ restorative minimizes the window of opportunity when saliva or blood could contaminate the restoration—and patients will love the shorter treatment time.



**ISOLATION IS CRITICAL**

— Surefil one™ restorative, 6 minutes, 50 seconds —



**ISOLATION IS CRITICAL**

— Layered composite, >10 minutes —

**To learn more, contact your local Dentsply Sirona sales representative or visit [www.dentsplysirona.com/class-ii-solution](http://www.dentsplysirona.com/class-ii-solution).**

**References:** 1. Key Group International Survey, 2019, n=300. For more information, contact Consumables-Data-Requests@dentsplysirona.com. 2. Gilbert GH, Litaker MS, Pihlstrom DJ, Amundson CW, Gordan VV. DPBRN Collaborative Group. Rubber dam use during routine operative dentistry procedures: findings from the Dental PBRN. *Oper Dent*. 2010;35(5):491-499. doi:10.2341/09-287C 3. Internal data on file. For more information, contact Consumables-Data-Requests@dentsplysirona.com.