

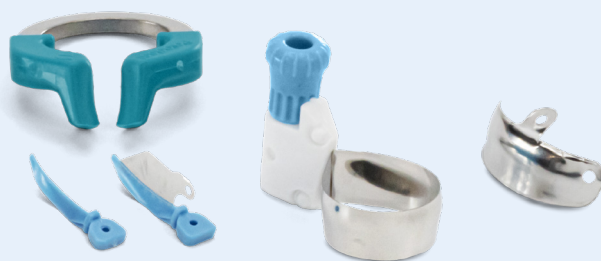
**For 70% of clinicians, contact creation is the most challenging part of a Class II restoration.<sup>1</sup>**

An open or improperly placed or shaped proximal contact can result in a fracture or food impaction, which can lead to periodontal inflammation, bone loss, and recurrent caries.<sup>2</sup>



## Create tight contacts easily and more predictably.

Use the Palodent® Family of Matrix Systems together with SDR® flow+ material to create contacts that accurately replicate natural tooth anatomy.



### Palodent® Matrix Systems

Palodent® sectional and circumferential matrix systems allow you to achieve contacts more predictably and easily. The system complements the tooth's natural anatomy, working together to isolate, seal, and shape the restoration.

### SDR® flow+ Bulk Fill Flowable

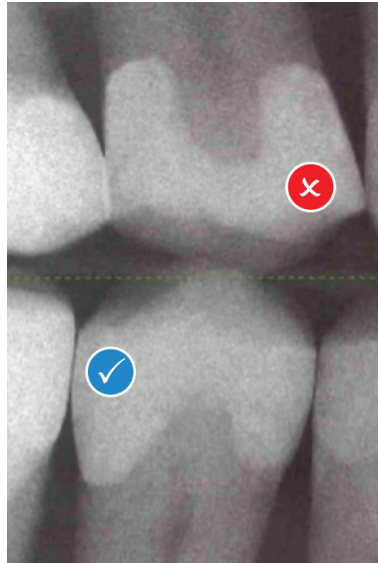
SDR® flow+ material has a unique self-leveling handling that allows the material to take the shape of the pre-contoured matrix band.



**Restore your love for Class II procedures with an approach that makes contact creation easier.**

The Dentsply Sirona Class II Approach provides everything you need to **create tight contacts** with ease.

### Palodent® Matrix Systems



### Tofflemire® circumferential band restoration

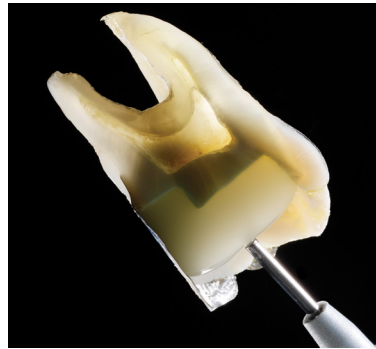
- ✗ Bulky, awkward system
- ✗ Failure to restore proximal anatomy, increasing risk of fracture, recurrent caries, and periodontal disease
- ✗ Thin or open contact at the marginal ridge with large food trap below
- ✗ Extensive finishing required

### Palodent® matrix system restoration

- ✓ Easy to use
- ✓ Natural contours
- ✓ Minimal interproximal finishing
- ✓ Tight, anatomically correct contacts



### SDR® flow+ Bulk Fill Flowable

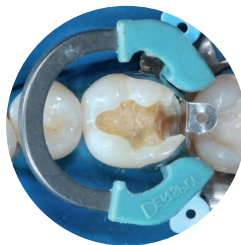


SDR® flow+ material self-leveling handling ensures intimate adaptation to the matrix band and to the cavity preparation.

## Class II Disto-Occlusal Composite Case



The old composite restoration and caries were removed.



The Palodent® Plus sectional matrix system was placed, and the hollow underside of the wedge allows placement of a second wedge from the opposite side for a tight gingival margin.



In a single increment of up to 4 mm, SDR® flow+ bulk fill composite was inserted to replace the dentin structure.



Appearance after placement of the composite.

Courtesy of Dr. Andre Reis, Sao Paulo, Brazil.

**To learn more, contact your local Dentsply Sirona sales representative or visit [www.dentsplysirona.com/class-II-solution](http://www.dentsplysirona.com/class-II-solution).**

Tofflemire is not a registered trademark of Dentsply Sirona.

**References:** 1. DentalTown. Restorative Dentistry. Monthly poll: what is the most challenging part of a Class II restoration? 2012.  
2. Rosenberg JM. Making contact: a method for restoring adjacent posterior direct resin. *Dent Today*. 2013;32(3):92,94-95.

©2022 Dentsply Sirona Inc. All rights reserved. ML425070F (9-28-22)

